



LEEBO GROUP
The Power of Copper

01.

ABOUT US



LEEBO GROUP

Shaped by a lineage of sound and straightforward business principles, **the Leebo Group** is built on the foundation of trust and transparency. The Group incorporates three companies, namely;

**Leebo Metals Private Limited,
Omega Rolling Mills Private Limited &
Leebex Metals Private Limited.**

Group companies are involved in the manufacturing of copper and copper-based products using forward and backward integration techniques

02.

GROUP COMPANIES



**LEEBO METALS
PVT LTD**

Leebo metals, being leaders in precision metal solutions, is into its **25th year of business**. It is located in Kachigam, **Daman** with **plant area of 4000 sq.mt** and installed **capacity of 15000 MT p.a.** Presently, in addition to manufacturing its own copper products, it serves as an **ancillary unit to Hindalco Copper** for their requirement OFC upcast rods



**OMEGA ROLLING
MILLS PVT LTD**

Omega Rolling Mills is a fully equipped plant with complete range of machinery to undertake end-to-end production. It is located in **Tarapur, Maharashtra** with **plant area of 6000 sq.mt** and installed **capacity of 9000 MT p.a.**



**LEEBEX METALS
PVT LTD**

To expand our presence in the southern markets of India, the **Leebo Group**, together with the promoters of a strongly positioned company in the industry, **Excel Metal Engineering**, conceptualized **Leebex Metals** (a joint venture) as a one-stop manufacturing solution for the **production of all copper and copper fabricated products**, right from procuring and processing the raw copper to the finished products. Situated in Nelamangala Taluk, **Bangalore**, ad-measured with a **plant area of 15000 sq.mt** approx, it has an installed **capacity of 5000 MT p.a.**

03.



Industries Serviced

The Products are consumed in volume by

-
Electrical Panel Board,
Thermal Power,
Switch gear,

Wind Power,
Transformers,
Telecommunication

Railways,
Automobiles-
to cite a few



Key Clientele

Bharat Heavy Electrical Ltd
Hindalco Industries Ltd
Raychem RPG Private Ltd

Legrand
Toshiba Transmission & Distribution Systems (India) Pvt Ltd
C&S Electric Ltd

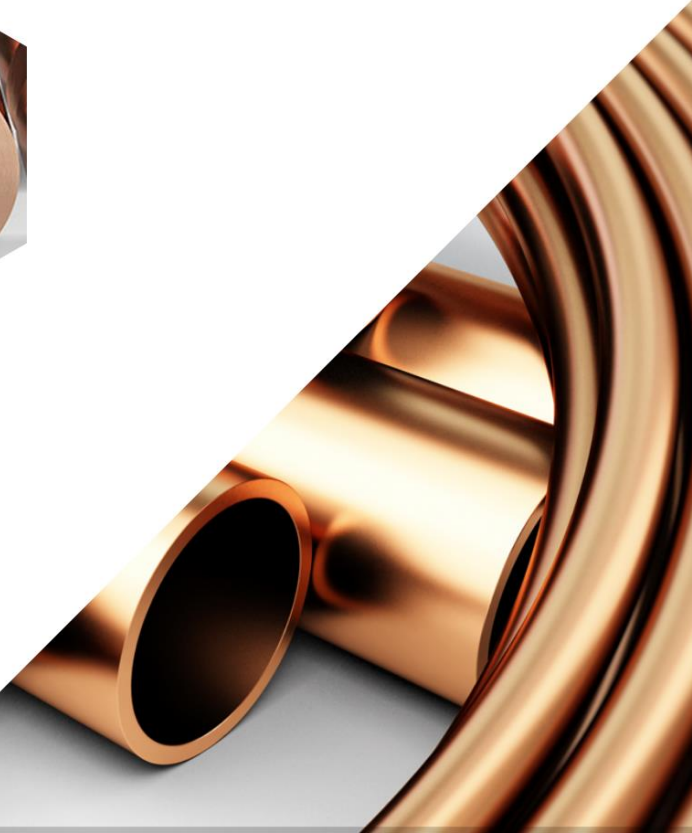
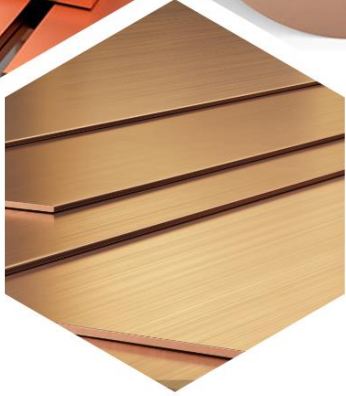
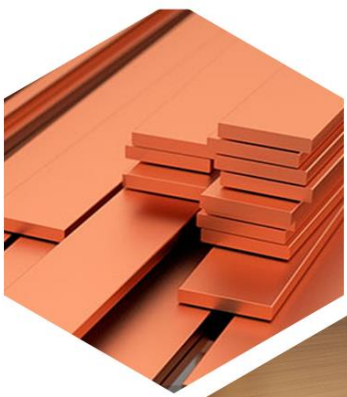
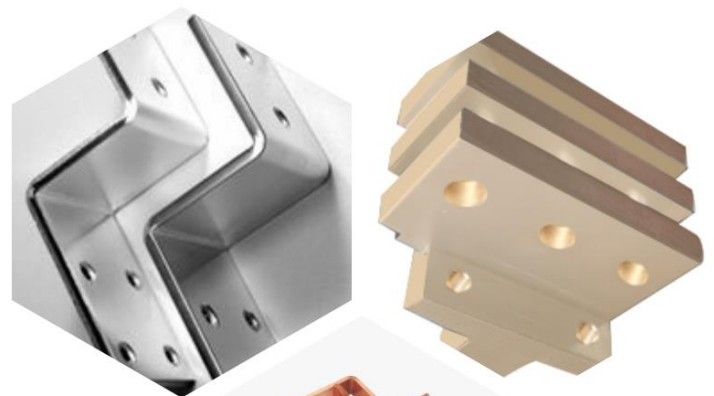
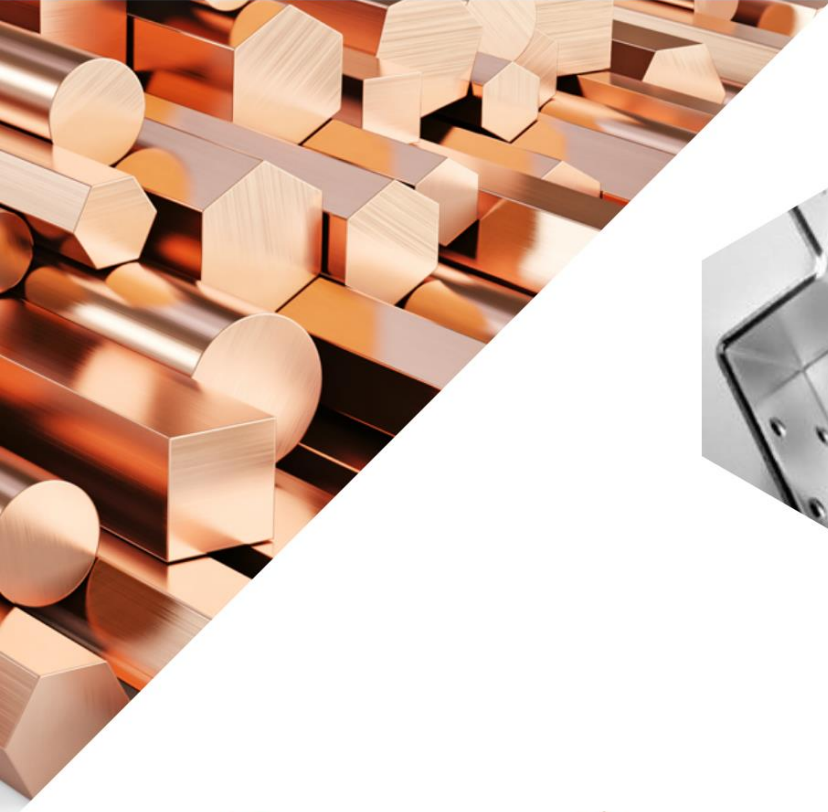
Godrej & Boyce Manufacturing Company Ltd
HBL Power Systems Ltd
Salzer Electronics Ltd

Hammond power solutions Pvt Ltd
Sterling Generators Pvt Ltd



04.

—
GALLERY
—





Sophisticated machinery to engineer all kinds of copper applications

05.

QUALITY & ACCREDITATION



Quality is the essence of the entire production process, An ISO 9001:2015 certified group Companies & its NABL certified Laboratory are well endowed with all testing equipment, which also includes GNR make spectrometer

Sourcing the best quality Raw Material - LME Grade A Copper Cathodes which undergo rigorous testing prior to processing.

GOALS

**Leebo Group
to emerge as a global
copper industry
benchmark for value
creation thus creating
more value for its
stakeholders.**

**Ask us to rise
and we will inquire**

"How High?"

DIRECTORS MESSAGE

As a globally responsible corporate entity, *LEEBO GROUP* continues to originate systems and services to create products that are backed by significant innovations that support a sustainable future. We are deeply committed in improving operating efficiencies through customer-centric inventions that enable safe applications of the products.

With more than 1000 clients under their name and a proven track record, *LEEBO GROUP* is one of the most sought after companies in the Asian region.